

ThinkSmart Hub

Smarter
technology
for all

Lenovo

Whether you're outfitting a large enterprise or a small start-up, ThinkSmart Hub offers smarter collaboration technology for conference rooms of all sizes. This latest generation all-in-one Microsoft Teams Rooms system offers richer audio with full duplex speakers and dual array mics integrated in an even smaller, sleeker device.

In addition to being built on the familiar Microsoft Teams Rooms platform, ThinkSmart Hub is easy to manage using Lenovo's custom-built ThinkSmart Manager software* along with the more personalized approach of Lenovo's optional Smart Office Professional Services. Combine all this with the built-in protection of Lenovo's ThinkShield security solutions and Intel vPro® platform, and you have a powerful tool for helping teams large and small to connect, share, and collaborate.



*Included for first year and available at an additional cost on subscription basis after that.



Built for Business

ThinkSmart Hub



BUILT FOR COLLABORATION

Built on the Microsoft Teams Rooms platform your employees already know and use, ThinkSmart Hub lets participants communicate via video, voice, or chat to collaborate about content in real time. Its rotatable 10.1-inch touchscreen display makes it easy for members of the group to share control of the meeting.



CLEANER LOOK AND SOUND

The newly redesigned ThinkSmart Hub delivers outstanding audio quality while taking up less space than ever before. It features four built-in full duplex speakers and four built-in dual array mics for fully immersive 360-degree sound. Plus, it is ultra-low noise certified for even better acoustic design. Sound isn't the only thing that stays clear. With a 20% smaller footprint than previous generations and the addition of ThinkSmart One Cable mechanism, ThinkSmart Hub also reduces tabletop clutter for a cleaner, neater space.



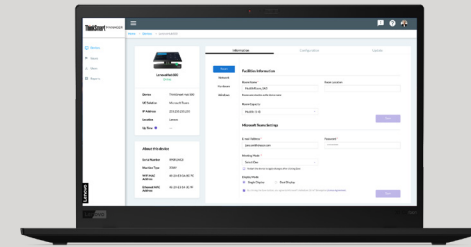
INCREDIBLY PRODUCTIVE

One-touch meeting start makes it easy for any participant to initiate a Microsoft Teams voice or video conference without dial-in delays. ThinkSmart Hub also keeps IT professionals more productive thanks to Lenovo's preloaded ThinkSmart Manager software.* This enables you to monitor, manage, and troubleshoot any number of ThinkSmart Hub devices from one, centralized location. Lenovo's optional Smart Office Professional Services provide additional, personalized support every step of the way.



ALWAYS SECURE

Teams can collaborate fearlessly knowing ThinkSmart Hub is backed by Lenovo ThinkShield, the most comprehensive, end-to-end security solution on the market that combines industry-leading secure hardware, software, services, and processes. This includes options for BIOS locking, I/O locking, and USB Smart Lock. These security solutions are further complemented by the Intel vPro® platform, which brings together the best of Intel innovations to better safeguard data and devices, while a Kensington™ MiniSaver lock slot protects against physical theft.



Lenovo ThinkSmart Manager

This proprietary, optional manageability console gives your IT team the power to deploy, monitor, and troubleshoot your entire fleet of Lenovo ThinkSmart devices all from one place.

- Leverage a single console to remotely deploy, manage, configure, update, and resolve issues
- See real-time status by device and receive live at-a-glance issues lists
- Streamline actions across multiple devices with "apply all" option
- Generate reports to keep tabs on device issues and trends
- Take advantage of elevated security options

*Included for first year and available at an additional cost on subscription basis after that.



ThinkSmart Hub

performance

PROCESSOR

Intel Core™ i5-8365U vPro®

OPERATING SYSTEM

Windows® 10 IoT Enterprise SAC 64 bit

MEMORY

8 GB (Dual-Channel) DDR4-2400 MHz

STORAGE

128 GB PCIe TLC SSD

GRAPHICS

Intel UHD Graphics 620

AUDIO

4x premium-tuned speakers

4x omnidirectional mics for 360-degree audio capture

SENSORS

IR-based human proximity sensor

INDICATOR LIGHTS

LED status light on hinge and top of screen

security

TPM 2.0

Kensington™ MiniSaver lock slot

ThinkSmart One Cable

connectivity

INPUT PORT

1x HDMI-In

USER ACCESSIBLE AND THINKSMART ONE CABLE PORTS

2x HDMI-Out

1x RJ45 Gigabit Ethernet

3x USB-A 3.2 Gen 1

1x USB-C 3.2 Gen 1

1x 3.5 mm audio (on base)

WIFI

WLAN 802.11 AC (2 x 2)

Bluetooth® Low Energy (LE) 5.0



design

DISPLAY

10.1" touch screen (1920 x 1080 resolution, 320 nits) with 16:10 aspect ratio, 360-degree rotatable, anti-glare and smudge resistant

DIMENSIONS (W X D X H)

240.0 x 200.0 x 185.3 mm

9.45 x 7.87 x 7.30 in

WEIGHT

2.47 kg/5.45 lbs.

manageability

ThinkSmart Manager

LANGUAGES SUPPORTED

English

French

Japanese

warranty

Base: 3 Year Onsite + Premier Support

optional services

Lenovo's Smart Office Professional Services offer personalized, end-to-end support to help you make the most of your ThinkSmart technology investment.

ASSESS

Lenovo is here to help identify any issues that could sidetrack your deployment by providing a detailed assessment of potential red flags and a follow-up report.

DEPLOY

From virtual deployment installation to integration assistance, Lenovo ensures your ThinkSmart devices function optimally in your office environment.

MAINTAIN

Our easy-to-follow do's and don't's, remote check-ins, and assistance with ongoing security patches and updates take the stress out of updates and device changes.

TRAIN

Lenovo helps instruct all your audiences—IT and AV support teams, end users, and executives—on how to fully take advantage of your new technology.

ONSITE

Lenovo provides white glove treatment through a dedicated, on-site specialist who can complete physical set up, installation, configuration, and device troubleshooting.



Smarter meetings start with ThinkSmart.

Learn more at www.lenovo.com/ThinkSmart

©2020 Lenovo. All rights reserved. These products are available while supplies last. Prices shown are subject to change without notice. For any questions concerning price, please contact your Lenovo Account Executive. Lenovo is not responsible for photographic or typographic errors. Warranty: For a copy of applicable warranties, write to: Warranty Information, 500 Park Offices Drive, RTP, NC 27709, Attn: Dept. ZPYA/B600. Lenovo makes no representation or warranty regarding third-party products or services. Trademarks: Lenovo, the Lenovo logo, Rescue and Recovery, ThinkPad, ThinkCentre, ThinkSmart, ThinkStation, ThinkVantage, and ThinkVision are trademarks or registered trademarks of Lenovo. Microsoft, Windows, and Vista are registered trademarks of Microsoft Corporation. Intel, the Intel logo, Intel Inside, Intel Core, and Core Inside are trademarks of Intel Corporation in the U.S. and/or other countries. Other company, product and service names may be trademarks or service marks of others.

Lenovo